

COMPOSITE GLAZING

The matchless fixed glazed roof light - flexible in format and glass compositions



Light up your world from above: Natural daylight for a comfortable atmosphere

Beside vertical-glazed elements COMPOSITE GLAZING can be used as a horizontal roof light in flat roofs. The optimal use of daylight is combined with all benefits of insulated glazing :

- Durability and hygiene
- Best values of heat, sun and sound protection
- Fall-safe protection without disturbing grids or railing

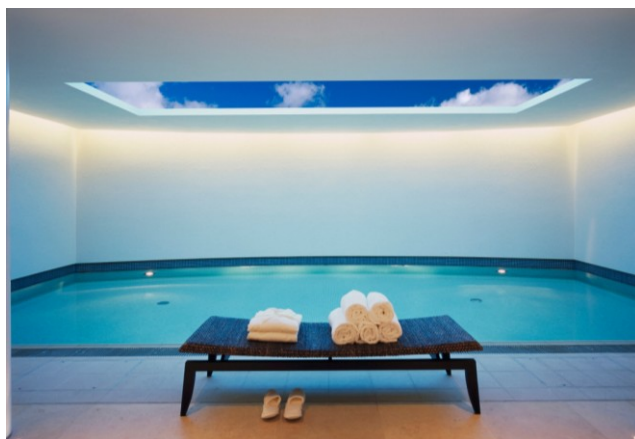
The fixed glazed skylight is bonded to a profile of GRP (glass fiber reinforced plastic) and thermally insulated. Individual forms, dimensions (up to 6.00 x 1.60 m) are possible and various fixing details feasible. It can be inserted in flat or pitched roofs.

Properties

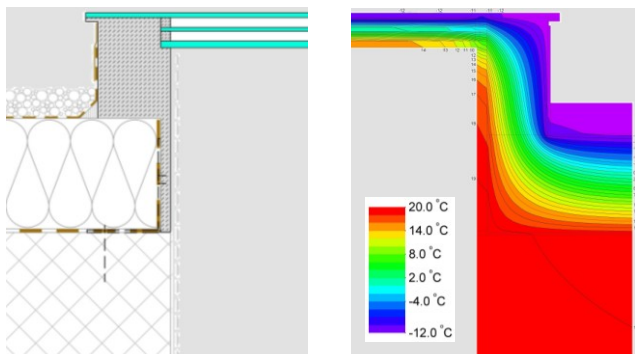
- Fix-bonded and thermally insulated bearing frame
- Individual dimensions and glass compositions are feasible
- With triple-glazed units and laminated safety glass

Values

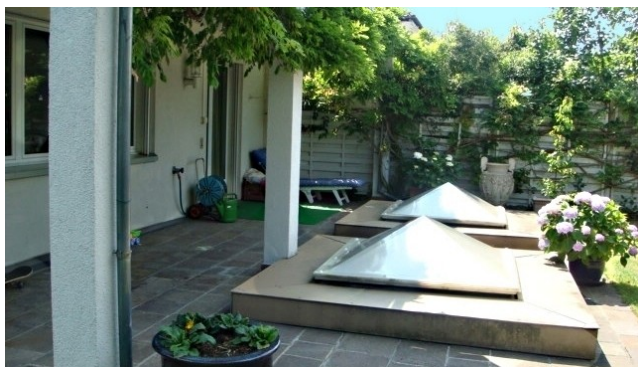
- U-value glass : 0.7 W/m²K (acc. EN 673)
- U-value frame : 0.35 W/m²K
- U-value skylight : 0.8 W/m²K
- g-value : possible from 15% to 60% (acc. EN 410)
- g-value with blinds: appr. 0.08
- Sound insulation : $R_w \leq 48$ dB



Natural illumination of a wellness oasis.



Detail of integration in the flat roof and isothermal calculation.



In the case of refurbishment : before ...



... and after !

Official Agent for Glas Trösch AG in the United Kingdom :
Gehrig Boren Planer AG, Cladding Consultants
Gewerbstrasse 18, CH-4553 Subingen
Phone +41 79 339 99 66, a.boren@gehrigborenplaner.ch

Glas Trösch AG Isolier- und Sicherheitsglas, -
Industriestrasse 29, CH-4922 Bützberg, www.glastroesch.ch